



River Ilen (Skibbereen) Drainage Scheme

PUBLIC EXHIBITION



Following the approval of an application for funding from the Office of Public Works (OPW) Cork County Council commissioned RPS in February 2011 to provide the Engineering and Environmental Consultancy Services required to undertake the "River Ilen (Skibbereen) Flood Risk Assessment and Management Study".

The primary deliverable from the Study is an outline design solution for the management of flood risk, known as the "River Ilen (Skibbereen) Drainage Scheme".

This preferred option for this Drainage Scheme is now being exhibited by the Office of Public Works in accordance with the provisions of the Arterial Drainage Acts 1945 and 1995.

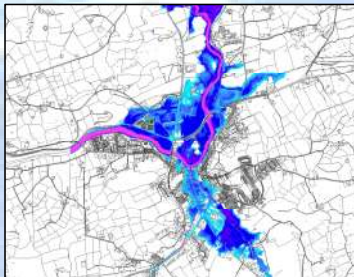


There are a number of sources of potential flooding in Skibbereen, including:

- Fluvial flooding of the River Ilen and its four tributaries, namely the Caol, Assolas, Glencurragh and Showgrounds Streams;
- Tidal flooding;
- Local storm drainage infrastructure.

Hydraulic modelling of the river system determined the inter-related nature of each of these sources of flooding.

Since the last public information day (25th Jan. 2012), the Environmental Impact Assessment has been completed and an Environmental Impact Statement has been prepared. In addition, further hydrological assessments, hydraulic modelling and stakeholder consultation has informed the outline design layout of the preferred scheme.



The design standard for the proposed scheme is the 0.5% AEP (Annual Exceedance Probability) event or the 1 in 200-year event.

A freeboard allowance of 500mm is applied to all defence heights and Climate Change is incorporated by designing defences to allow for future adaptation at a later date.

Outline design of the preferred scheme has now been completed and both Primary and Secondary Flood Risk Management Measures have been identified.

The Primary Measures, as indicated on the Exhibition Drawings, include the following works:

- Embankments:** c.4.2km (average height approx. 1.5m)
- Walls:** c.2.9km (average height approx. 1.5m)
- Culverts (replacement/extension):** 4 No.
- Channel Regrading:** 1 No. area adjacent to John F. Kennedy Bridge
- Pumping stations:** 1 No. (circa 1 cu.m/s capacity)
- Drainage pumping stations:** 3 No.
- Road/surface water drainage:** Various locations including non-return valves, localised land drainage behind embankments, sealing manholes, sealing historic culverts etc.

In addition to the Primary Measures, the following Secondary Measures will be incorporated in the Flood Risk Management Plan for the town:

- Public Awareness Campaign
- Proactive and Planned Maintenance Programme
- Planning & Development Controls

Detailed Design will be completed following Public Exhibition.

Detailed Site Investigations:	May to August 2013
Detailed Topographical Survey:	May to August 2013
Detailed Design:	July to December 2013
Contractor Procurement:	Spring 2014
Construction Stage:	2014 to 2016

The estimated construction cost is approximately **€14 M** excl VAT.

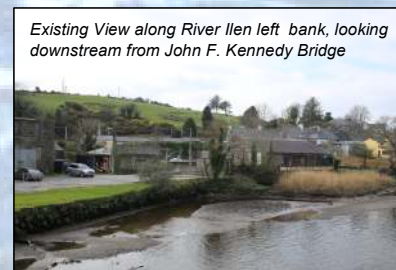
A copy of the Drainage Scheme will be available for inspection by the public from: **11th April 2013 to 10th May 2013.**

Written Submissions can be made on the Scheme before **31st May 2013.** Submissions should be addressed to:

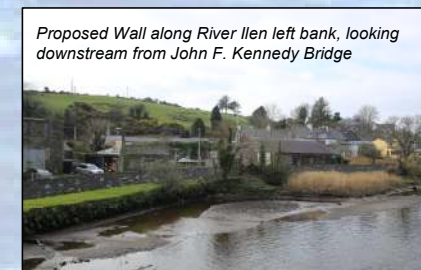
Office of Public Works, Flood Projects Management Services,
17-19 Lower Hatch Street, Dublin 2.

Personnel from the Scheme's Design Team will be available at the Skibbereen Town Council Chambers to assist the public with their queries at the following times:

- Thursday 11th April 2013 from 2:00pm to 8:00pm**
- Wednesday 17th April 2013 from 10:00am to 5:00pm**
- Friday 26th April 2013 from 10:00am to 5:00pm**
- Thursday 9th May 2013 from 2:00pm to 8:00pm**



Existing View along River Ilen left bank, looking downstream from John F. Kennedy Bridge



Proposed Wall along River Ilen left bank, looking downstream from John F. Kennedy Bridge

